

# Parksafe - Product Specification Sheet



## PS1140DK - Double Knock Commercial Parking Sensor Kit

Commercial Rear Sensor Kit with underhung brackets & buzzer. Engaging reverse twice in quick succession will cancel Buzzer for when working at night (11pm - 7am) or with a trailer and silence is required.

After 15 seconds the system resets itself

### Key Specification:

#### Description:

- 18.8mm low profile angled sensor heads
- 4 x rubber sensor heads
- 4 x underhung brackets
- Tow bar ignore function
- A & D distance reduction
- Audible buzzer: High: 108+-8dB Low: 80+-10dB
- Sensor installation height adjustable

### Additional Specification:

#### Specification:

- A & D distance reduction
- Audible buzzer: High: 108+-8dB Low: 80+-10dB
- Voltage: 12/24V
- Power cable: 0.8m with fuse
- Sensor cable: 2.5m
- Buzzer cable: 2.5m
- Detection range: 0.2 - 1.5m • Frequency: 40KHz
- Working temp: -20~ +80°C
- IP rating of sensors: IP67



PS1140DK



Date Created:

24/06/2022

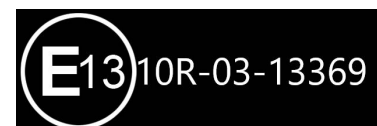
Specification Sheet  
Number:

JAY10010005

V1.1

### Approvals & Certifications:

E Mark



### Box Contents:

1 x Buzzer, 1 x Double Knock Control box, 4 x Sensors and leads, 4 x Brackets,  
1 x Power lead, 1 x Fixing kit, 1 x Manual